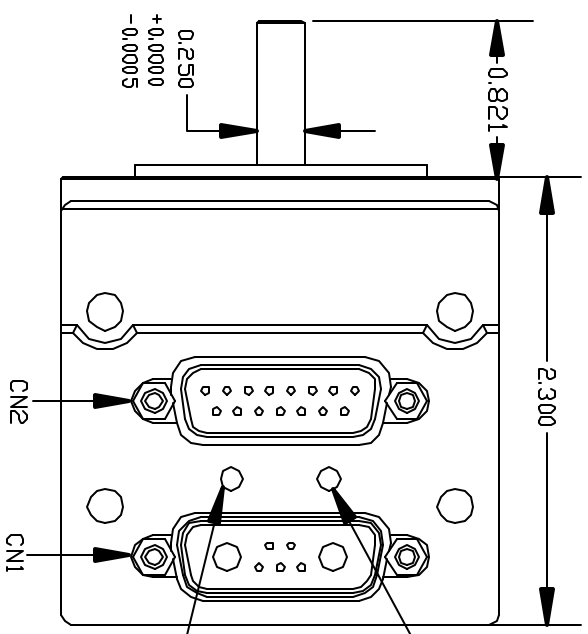
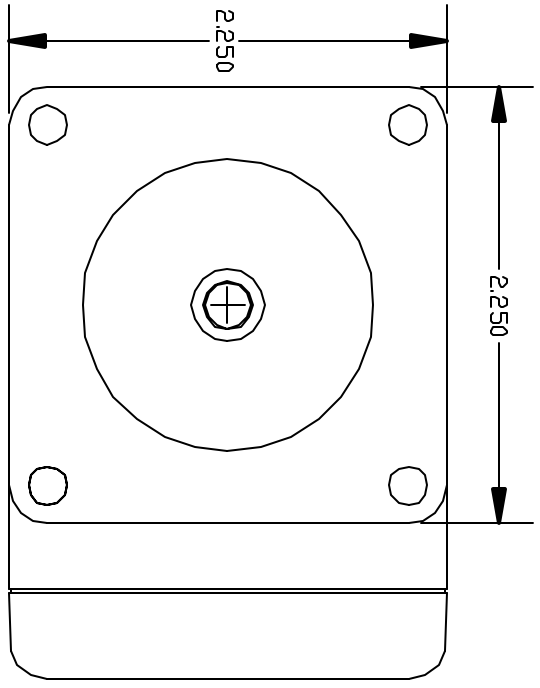


- NOTES: 1) TIED INTERNALLY: TX, CN2 PIN 10 TO CNI, PIN 3
 RX, CN2 PIN 11 TO CNI, PIN 4
 2) TIED INTERNALLY: +5V, CN2 PIN 12 TO CNI, PIN 2
 GND/CN2, PIN 14 TO CNI, PIN A2
 PWR, CN2 PIN 15 TO CNI, PIN A1
 3) FOR HIGH SPEED OR HIGH TORQUE OPERATION USE POWER
 PIN A1 AND A2 ON CNI.
 4) REFER TO DRAWING '2315D' FOR MECHANICAL DIMENSIONS



CN2: 15 PIN D-SUB FEMALE CONNECTOR		SOFTWARE SELECTABLE FUNCTIONS	
PIN#	NAME	SPECIAL FUNCTIONS	DIGITAL I/O (TTL) ANALOG INPUT (10 bit)
1	Port A	Step Input	5V 0 to 5V
2	Port B	Direction Input	5V 0 to 5V
3	Port C	Right Limit Input	5V 0 to 5V
4	Port D	Left Limit Input	5V 0 to 5V
5	Port E	Anilink Data	5V 0 to 5V
6	Port F	Anilink Clock	5V 0 to 5V
7	Port G	G-Syn/RS485 Adapter Flow Control Line	5V 0 to 5V
9	ENCA DUT	Encoder A Output	
	ENCB DUT	Encoder B Output	
10	RS232 TX	RS232-Transmit	
11	RS232 RX	RS232-Receive	
12	+5V DUT	+5V DUT	
13	GND	Signal Ground	
14	PWR GND	Power Ground	
15	POWER	Power, +24v to 48v	

CNI: 7 PIN COMBD D-SUB MALE CONNECTOR		FUNCTIONS	
PIN#	NAME	FUNCTIONS	
1	Port G	Go-Synchronization Pin	
2	+5V DUT	+5V DUT	
3	RS232 TX	RS232-Transmit	
4	RS232 RX	RS232-Receive	
5	GND	Signal Ground	
A1	POWER	Power, +24v to 48v	
A2	PWR GND	Power Ground	

TITLE: SM2315D PINDOUT

REV: 3 MATERIAL: CAST ALUMINUM

DATE: 2/28/03 FINISH: BLACK POWDER COAT

TOL: X.XXX +/- .005
 X.XXX +/- .005
 INCHES X.XX +/- .01

ANIMATICS CORPORATION
 3050 TASMAN DR, SANTA CLARA

UNLESS OTHERWISE NOTED